

**GUIDELINES FOR PATENT FILING
PONDICHERRY UNIVERSITY**



**INTELLECTUAL PROPERTY MANAGEMENT (IPM) CELL
PONDICHERRY UNIVERSITY**

General Guidelines for Patent Filing

I. Patent Filing through PU

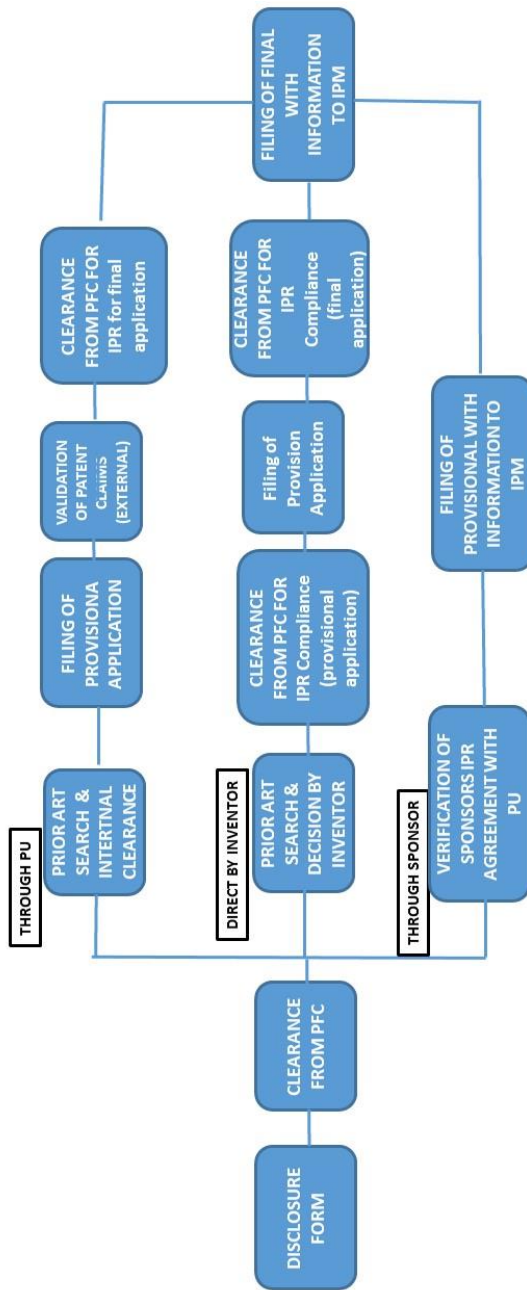
1. Submit form A1, A2, P1 and Annexure III
2. PFC shall examine and give concurrence for provisional patent filing
3. Submit form P2, Annexure IV
4. Provisional patent filing by PFC

II. Patent Filing by the Inventors on their own

1. Submit form A1, A2, P1, Annexure III
2. Obtain clearance from PFC for conformity to IPR norms of PU
3. Give undertaking that IPR policy of PU shall be followed
4. Process the provisional filing by inventor and intimate to PFC on provisional filing status
5. Proceeding for complete filing with intimation to PFC on filing status

III. Others having MoU/contract agreement/ research project based filing, please contact PFC for details

STEP BY STEP PROCESS FOR FILING PATENT



INTELLECTUAL PROPERTY MANAGEMENT CELL, PONDICHERRY UNIVERSITY